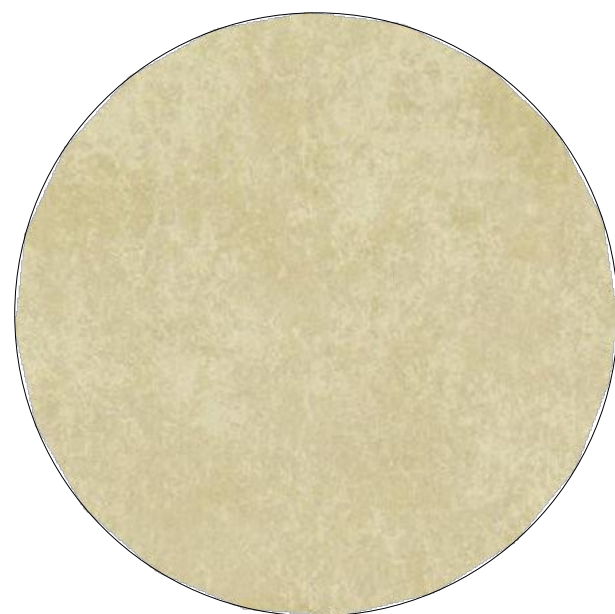


1 SMOOTH STUCCO FINISH
SW-7005 PURE WHITE
SHERWIN-WILLIAMS
OR EQUIVALENT APPROVED
BY ARCHITECT



2 SMOOTH STUCCO FINISH
AF-685 THUNDER
BENJAMIN MOORE
OR EQUIVALENT APPROVED
BY ARCHITECT



3 SMOOTH STUCCO FINISH
CHAMPAGNE GOLD
OR EQUIVALENT APPROVED
BY ARCHITECT



4 ALUMINUM CLADDING PANELS
CHAMPAGNE GOLD
OR EQUIVALENT APPROVED
BY ARCHITECT



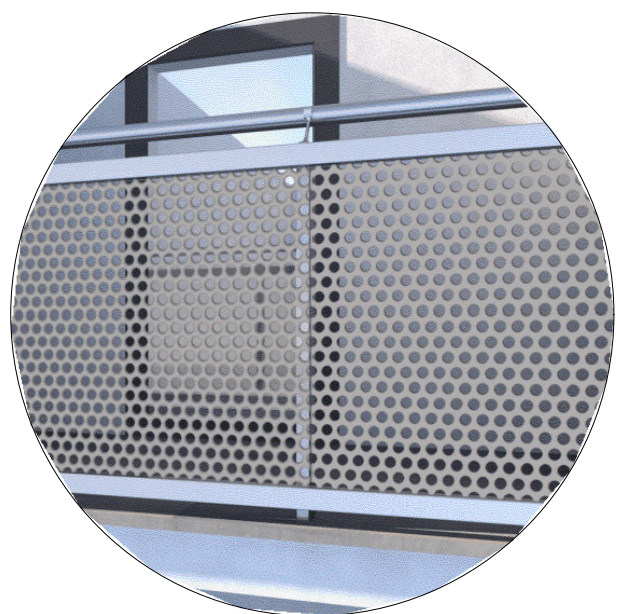
5 WOOD-POLYPROPYLENE COMPOSITE
NICHIA RIFTSAWN CHESTNUT
OR EQUIVALENT APPROVED
BY ARCHITECT



6 TINTED GLASS FOR STOREFRONTS,
WINDOWS, BALCONY DOORS
VIRACON OPTIGRAY
OR EQUIVALENT APPROVED
BY ARCHITECT



7 ALUMINUM FRAME
2134-30 IRON MOUNTAIN
BENJAMIN MOORE
OR EQUIVALENT APPROVED
BY ARCHITECT



8 METAL MESH RAILING
CHAMPAGNE GOLD
OR EQUIVALENT APPROVED
BY ARCHITECT



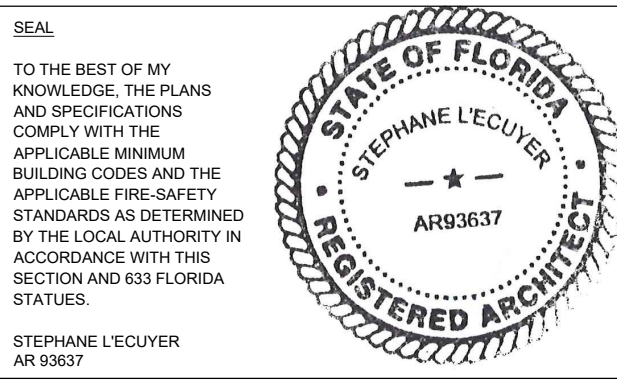
9 FACTORY PAINTED
ALUMINUM EXTRUSIONS
WOOD COLOR
OR EQUIVALENT APPROVED
BY ARCHITECT



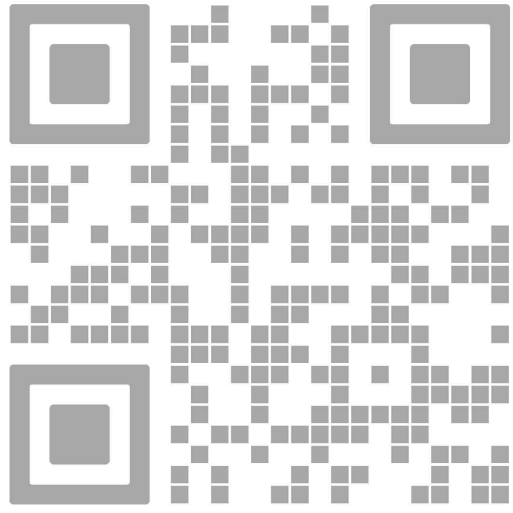
10 PARKING GARAGE SCREENING
VENTILATED METAL MESH



absolute-idea.com
CANAL PARK
3323 NE 163rd Street, Suite 200 North Miami Beach, FL 33160
T 305.792.0015 T 305.931.0279 @info@absolute-idea.com



ISSUE FOR:
DRC SUBMITTAL



REV.	DATE	DESCRIPTION
01	01-29-2025	D.R.C. SUBMITTAL

ALL MEASUREMENTS MUST BE VERIFIED BEFORE BEGINNING THE WORK. NO MEASUREMENTS ARE TO BE SCALED DIRECTLY FROM THIS DRAWING.

Key section

Client
VERA FUND
NICK POLYUSHKIN
& YURI KHARITONENKOV
TEL: 305.833.3303

Project
**1600 S FEDERAL HIGHWAY
(MIXED-USE PROJECT)**
1600 SOUTH FEDERAL HIGHWAY,
POMPAÑO BEACH, FL 33062

Title		South Elevation	
Drawn	J. WU	Field	ARCHITECTURE
Verified	N. TREMBLAY	Scale	as shown
Approved	S. L'ECUYER	Date	01-29-2025
Project	J. WU	Dwg. no.	A-502

DRC

01 SOUTH ELEVATION
A-502 SCALE: 1"= 40'-0"

PZ24-12024-338

03/05/2025